

ENTRANCE EXAM**TYPE A PERFORMANCE ASSIGNMENT**

(Revised 2/6/2022)

NAME	DATE	FORMAT: Steam-able links (preferred) or MP4 file
------	------	---

DIRECTIONS: Record a video file of your playing for the following sections. Once you begin, **DO NOT STOP OR EDIT THE RECORDING**. The performance must be completed in **ONE** session. **ANY PERFORMANCES THAT HAVE BEEN EDITED WILL NOT BE CONSIDERED**. Make sure the metronome can be heard throughout the performance and also to clearly state which section you will perform next.

100 total points possible**CHORDS/HARMONY:**

1.1- Play the following 12 bar blues example twice through with a metronome at Quarter note =100. Play the first chorus with a straight eight note feel. Play the second chorus with a swung eight note feel. Do not stop until you have completed both choruses.

The image shows a 12-bar blues chord progression in 4/4 time. The first line contains measures 1-4 with chords A7, D7, A7, and A7. The second line contains measures 5-8 with chords D7, D7, A7, and A7. The third line contains measures 9-12 with chords E7, D7, A7, and A7, ending with a double bar line.

(10 points possible)

1.2- Play the following example with a metronome set to Quarter note = 120. Demonstrate accurate timing, feel, and coordination between the left and right hands.

♩ = 120

mp *p* *f*

mf *ff*

(10 points possible)

1.3- Play the following example in a **ballad** style with a metronome set to Quarter note = 76 BPM. Use upper chord extensions wherever possible.

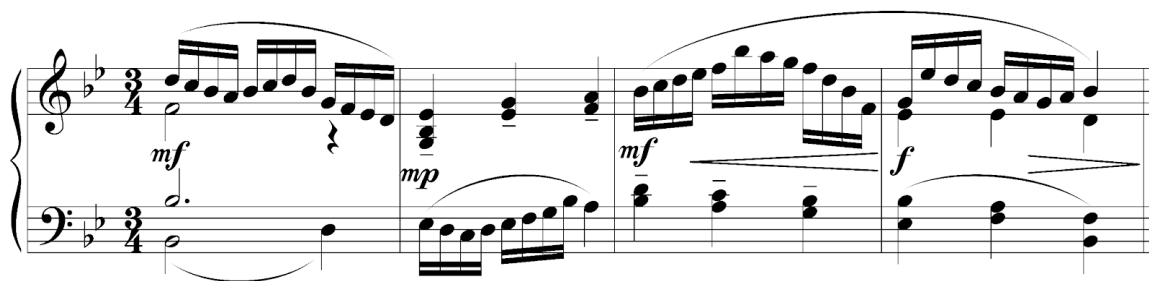
Bbmaj7 Gm7 Cm9 F13

Dm7 G7 Ebmaj7 F7

(10 points possible)

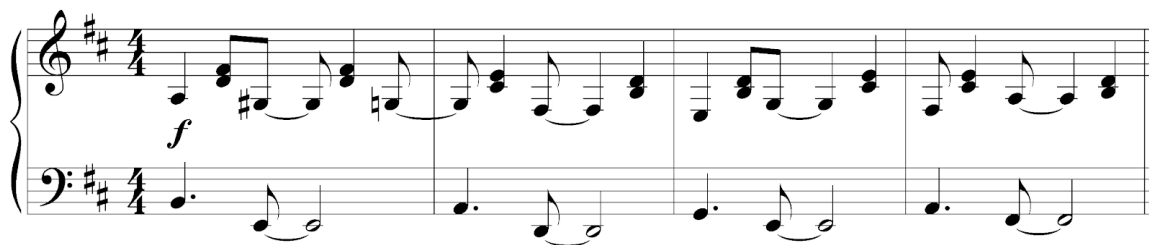
READING:

2.1- Play the following example with a metronome set to Quarter note = 88.



(10 points possible)

2.2- Play the following melodic example with a metronome set to Quarter note =100.



(10 points possible)

TECHNIQUE:

Play the following examples in steady eighth notes with a metronome at Quarter note =100 BPM. Play ascending and descending **FOUR** octaves of each example. Use both hands.

3.1- Major Scales

3.1a- F# major scale

3.2- Natural Minor Scales

3.2a- Ab minor scale

3.3- Major Triad Arpeggios in Root Position

3.3a- A# major triad

3.3b- Eb major triad

3.4- Minor Triad Arpeggios in Root Position

3.4a- F# minor triad

3.4b- E minor triad

3.5- Major Seventh Arpeggios in Root Position

3.5a- C# major 7

3.5b- Eb major 7

3.6- Dominant Seventh Arpeggios in Root Position

3.6a- Bb dominant 7

3.6b- Ab dominant 7

(1-point each, 10 points)

EAR TRAINING:

4.1- Play the following pitches on piano and sing the given interval.

4.1a- A#. Augmented 4th below

4.1b- F. minor 6th above

4.2- Sing an F# major triad arpeggio ascending and descending. You are allowed to use a reference pitch to find the first note.

4.3- Sing a D natural minor scale ascending and descending. You are allowed to use a reference pitch to find the first note.

4.4- Sing a B minor triad arpeggio ascending and descending. You are allowed to use a reference pitch to find the first note.

(2-point each, 10 points)

THREE PERFORMANCE: The performance will be automatically considered for Merit based Scholarships.

5.1-5.2 Play TWO performance videos including improvised solos in different styles. Demonstrate an accurate time feel, appropriate tone, and ideas that are characteristic of the style (rock, funk, jazz, latin, etc.). You may use a live band or a backing track such as a sequencer, Band-In-A-Box, I Real B, Play-Along CD, etc. to accompany each solo. Make sure the device can be heard on the recording.

5.3 Play ONE solo performance without any accompaniment.

(10 for each performance, 30 points possible)