



BACHELOR OF MUSIC IN BASS PERFORMANCE

ENTRANCE EXAM

TYPE A PERFORMANCE ASSIGNMENT

(Revised 2/6/2022)

NAME	DATE	FORMAT: Steam-able links (preferred) or MP4 file
------	------	--

DIRECTIONS: Record a video file of your playing for the following sections. Once you begin, **DO NOT STOP OR EDIT THE RECORDING**. The performance must be completed in **ONE** session. **ANY PERFORMANCES THAT HAVE BEEN EDITED WILL NOT BE CONSIDERED**. Make sure the metronome can be heard throughout the performance and also to clearly state which section you will perform next.

100 total points possible

TECHNIQUE/FEEL:

1.1-Play the following scales in two octaves, ascending and descending **without** repeating the highest note. Play each scale in eighth notes with a metronome set at **Quarter=100 BPM**.

Eighth note = 200 (Quarter note =100).

- 1.1a-** C# Major Scale
- 1.1b-** Ab Harmonic Minor Scale
- 1.1c-** Bb Mixolydian Scale
- 1.1d-** C Minor Pentatonic Scale
- 1.1e-** F# Major Pentatonic Scale

(2-point each, 10 points)

1.2-Arpeggiate the following chords using a 1-3-5-7 sequence. Ascend and descend two octaves:
Emaj7 Fmin7b5 D#7 Adim7 Gb7#5

(2-point each, 10 points)

1.3-Play a G dominant 7th arpeggio starting from the lowest chord tone possible on your instrument up to the highest possible note and back down to where you started.

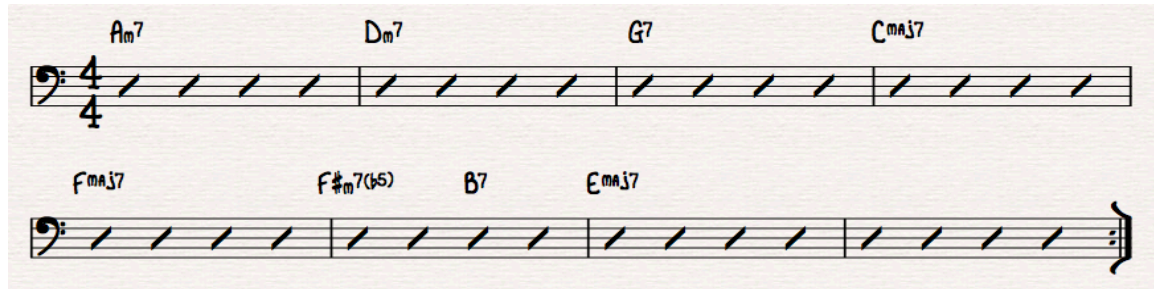
Use only 1-3-5-7.

(5 points)

1.4- Play 2 choruses of a 12 bar blues in F demonstrating a bass line in a Shuffle style. Perform a swung eight note feel at Quarter note =120. Use a metronome (which you may also set on beats 2 and 4 at Half note = 60 to imply the swing feel).

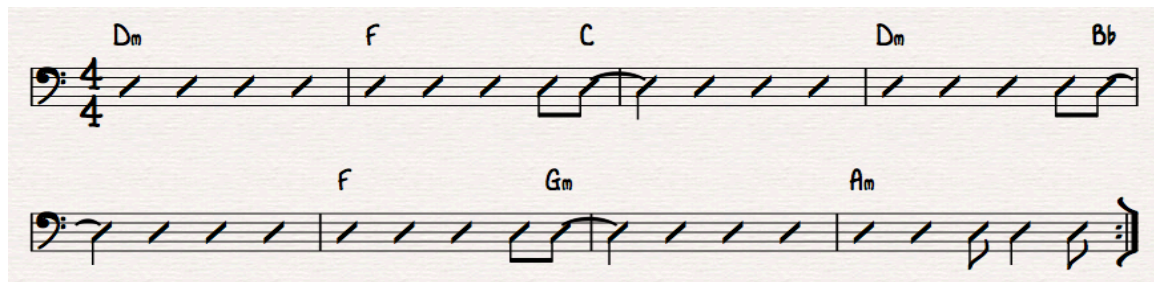
(10 points)

1.5- Play the following example using a walking bass line in the jazz style. Play through the example two times at Quarter note =140. Use a metronome (which you may also set on beats 2 and 4 at Half note = 70 to imply the swing feel).



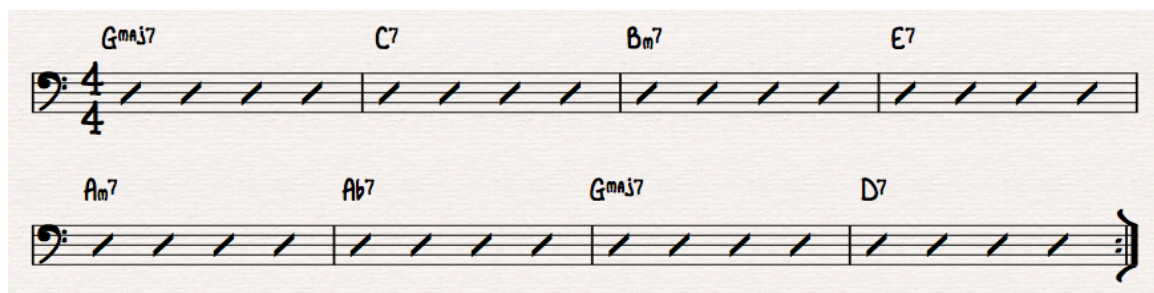
(5 points)

1.6- Play the following example using a straight eight note rock bass line. Play through the example two times at Quarter note =120.



(5 points)

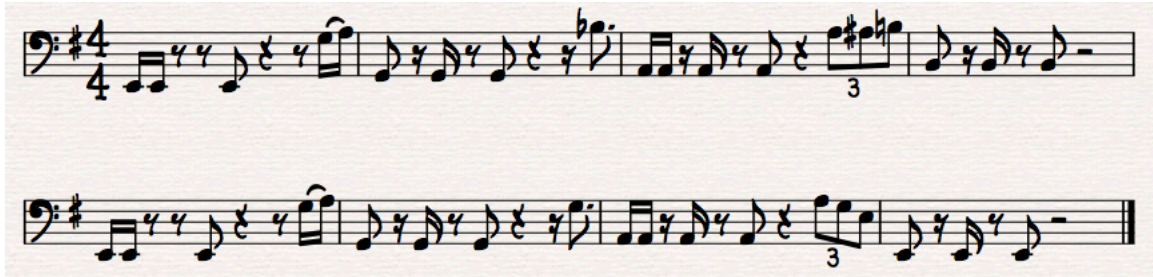
1.7- Play the following example using a Bossa Nova style bass line. Play through the example two times at Quarter note =130.



(5 points)

READING:

2.1- Play the following example using the written bass line in a funk style. Play through the example two times at Quarter note = **120**.



(10 points)

2.2- Play the following melodic example on your instrument with a metronome set to a straight eight note feel at Quarter note = **120** (minimum).



(10 points)

THREE PERFORMANCE: The performance will be automatically considered for Merit based Scholarships.

3.1-3.2 Play two improvised solos in different styles. Demonstrate an accurate time feel, appropriate tone, and ideas that are characteristic of the style (rock, funk, jazz, latin, etc.). Each solos must be a minimum of 16 measures in length and at a minimum tempo of Quarter note = **110**. Use a backing track such as a sequencer, Band-In-A-Box, I Real B, Play-Along CD, etc. to accompany each solo. Make sure the device can be heard on the recording.

3.3 Play ONE solo performance without any accompaniment.

(10 for each performance, 30 points possible)